



Hard Chess Puzzle # 0093

By

G Bud Games
<https://gbud.in>

January 3, 2022

Contents

Hard Chess puzzle # 0093 - Mate in 3 moves	4
Hard chess puzzle 0093	4
Solution to hard chess puzzle 0093	5
Solution 1	5
Solution 2	8
Right moves for the solution to the hard chess puzzle 0093	11
Explanation for the moves	11
Categories of hard chess puzzle 0093	12
hard chess puzzle 0093 chart	13
How to view the solution to hard chess puzzle 0093	15
How to get help for moves in the hard chess puzzle 0093	16
Play chess for free	17

List of Figures

1	Solve this hard chess puzzle 0093. Mate in 3 moves @ https://gbud.in/gl1lb53	4
2	Solve this hard chess puzzle online with solution @ https://gbud.in/gl1lb53	4
3	Initial board position of hard chess puzzle 0093	5
4	Rd1+	6
5	Rxd1	6
6	Qxd1+	7
7	Rxd1	7
8	exd1=Q#	8
9	Initial board position of hard chess puzzle 0093	8
10	Rd1+	9
11	Rxd1	9
12	Qxd1+	10
13	Rxd1	10
14	exd1=R#	11
15	hard chess puzzle 93 chart 1	13
16	hard chess puzzle 93 chart 2	14
17	hard chess puzzle 93 chart 3	14
18	hard chess puzzle 93 chart 4	15
19	Click the solution button to view solutions @ https://gbud.in/gl1lb53	15

20	Click the help button to get help on next move @ https://gbud.in/gl1lb53	16
21	Solve more hard puzzles @ https://gbud.in/chshdpz	16
22	Solve other puzzles @ https://gbud.in/chsgppz	16
23	Play chess online for free. Solve puzzles and play with friends	17
24	Solve this puzzle online by scanning this QR code or go to the link below	18

Hard Chess puzzle # 0093 - Mate in 3 moves

Solve this hard chess puzzle and improve your chess games through improvement of your chess strategies and chess tactics. This hard puzzle is a subset of [kids games](#).

Puzzle No : 0093

Difficulty level : hard

Description : Mate in 3 moves

Next Move : Black

Player level : Advanced

Short URL for puzzle : <https://gbud.in/gl1lb53>

Hard chess puzzle 0093

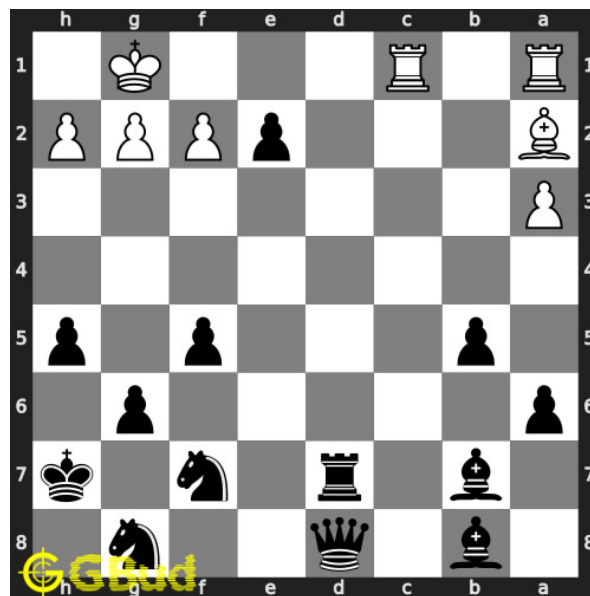


Figure 1: Solve this hard chess puzzle 0093. Mate in 3 moves @ <https://gbud.in/gl1lb53>



Figure 2: Solve this hard chess puzzle online with solution @ <https://gbud.in/gl1lb53>

Dont forget to check out [chess puzzles](#), [easy chess puzzles](#), [medium chess puzzles](#), [hard chess puzzles](#) and [chess puzzles collections](#) .

Solution to hard chess puzzle 0093

At this puzzle, next [move](#) is by [Black](#). The objective of the puzzle is to mate in 3 moves.

See the interactive solution at the [puzzle page](#)

Solution 1

Initial board position This is the initial board position of hard chess puzzle 0093.

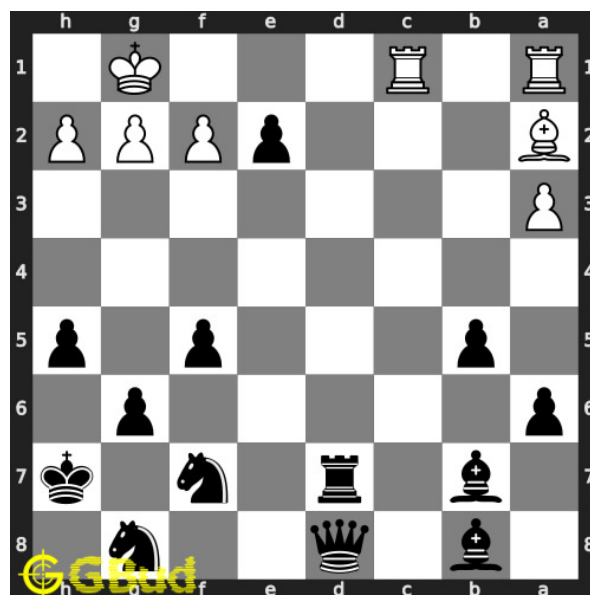


Figure 3: Initial board position of hard chess puzzle 0093

Move 1 Move by black

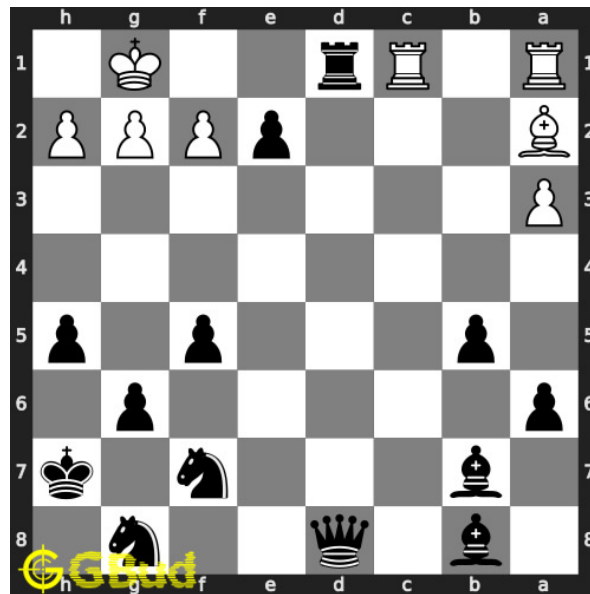


Figure 4: Rd1+

your **rook sacrifices** itself to deflect the opponent's **rook** which is in **battery** formation by giving a **check**

Move 2 Move by white

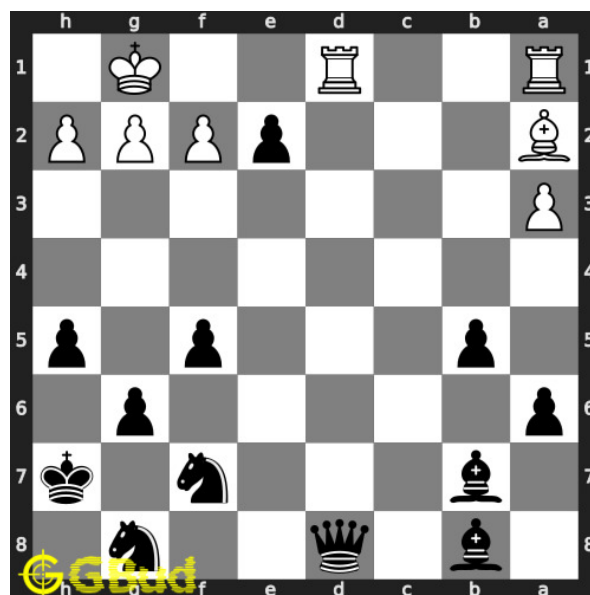


Figure 5: Rxd1

opponent's **rook captures** your piece as this is the only legal **move** available.

Move 3 Move by black

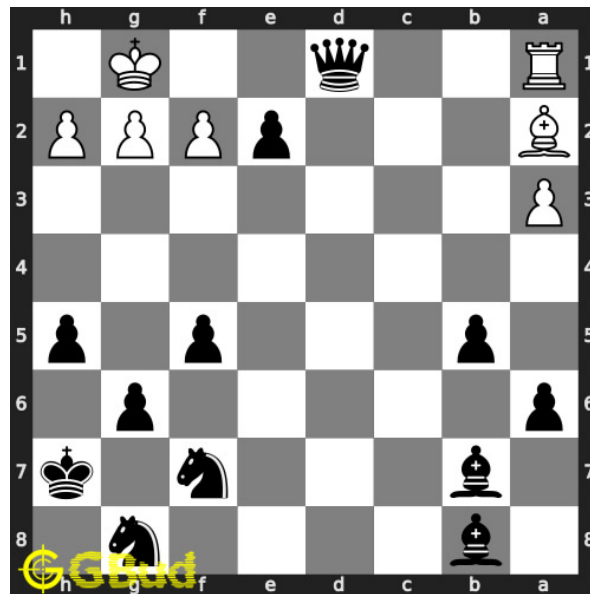


Figure 6: Qxd1+

your **queen sacrifices** itself by capturing the opponent's **rook** and giving next **check**. this will deflect the opponent's next **rook**

Move 4 Move by white

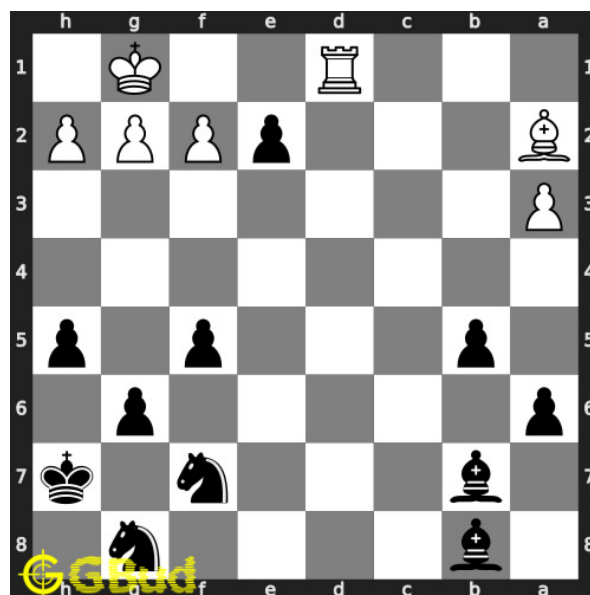


Figure 7: Rxd1

opponent's **rook captures** your piece as this is the only legal **move** available.

Move 5 Move by black

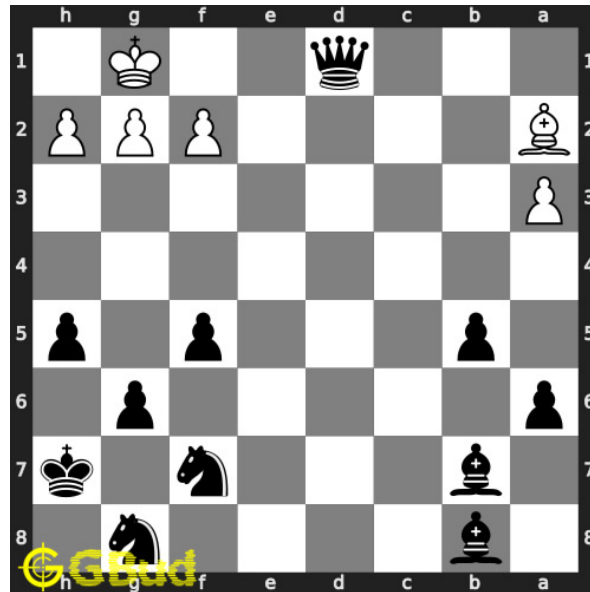


Figure 8: exd1=Q#

pawn in e file is promoted to a queen after capturing the opponent's rook. opponent's king has no free squares to move as it is blocked by friendly pawns. this is called back-rank mate. this is how you can mate in 3 moves.

Solution 2

Initial board position This is the initial board position of hard chess puzzle 0093.

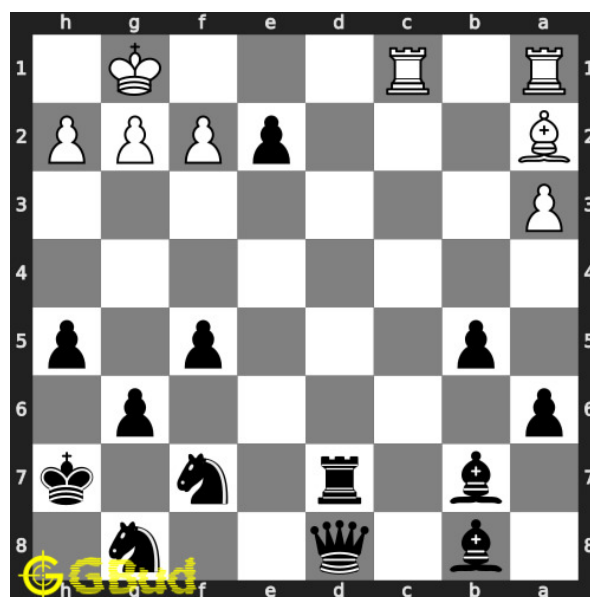


Figure 9: Initial board position of hard chess puzzle 0093

Move 1 Move by black

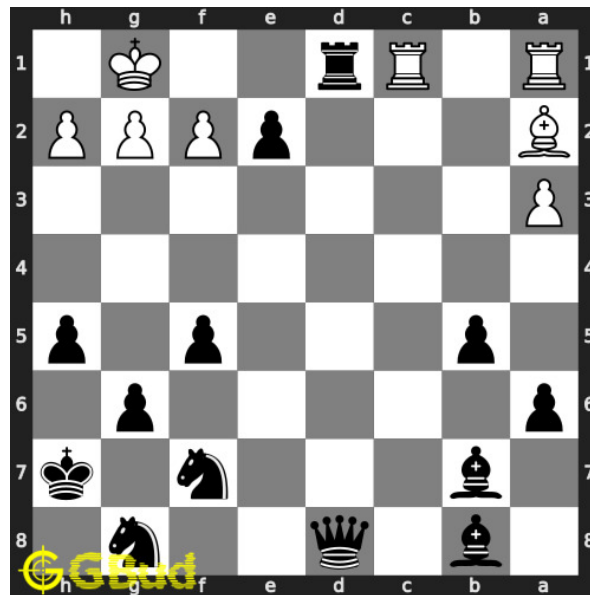


Figure 10: Rd1+

your **rook sacrifices** itself to deflect the opponent's **rook** which is in **battery** formation by giving a **check**

Move 2 Move by white

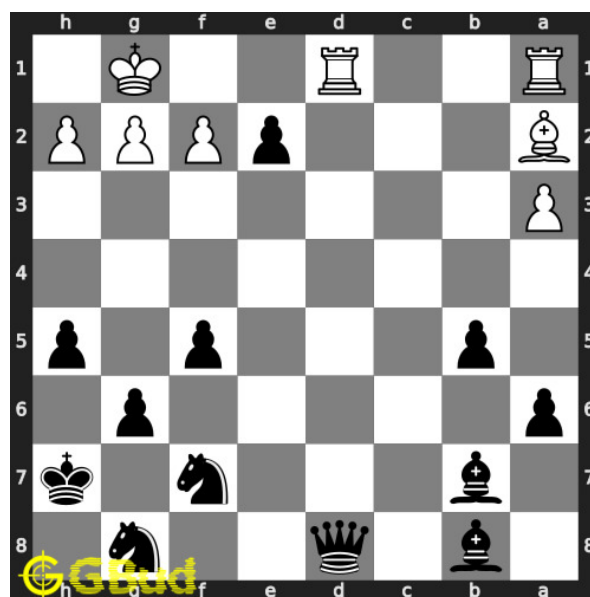


Figure 11: Rxd1

opponent's **rook captures** your piece as this is the only legal **move** available.

Move 3 Move by black

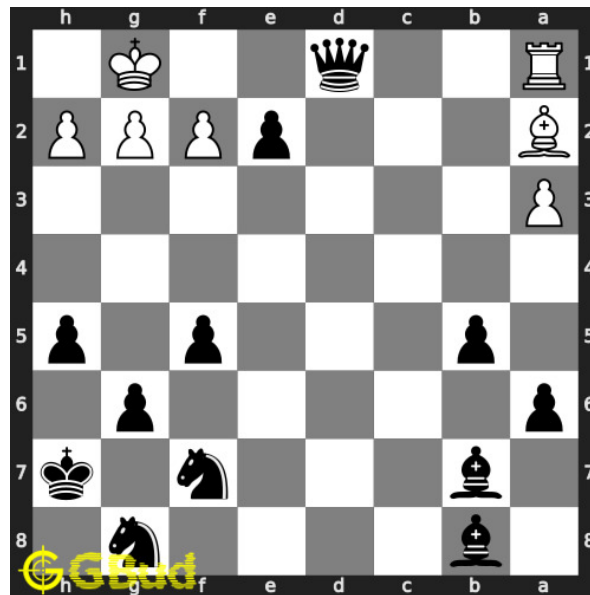


Figure 12: Qxd1+

your [queen sacrifices](#) itself by capturing the opponent's [rook](#) and giving next [check](#). this will deflect the opponent's next [rook](#)

Move 4 Move by white

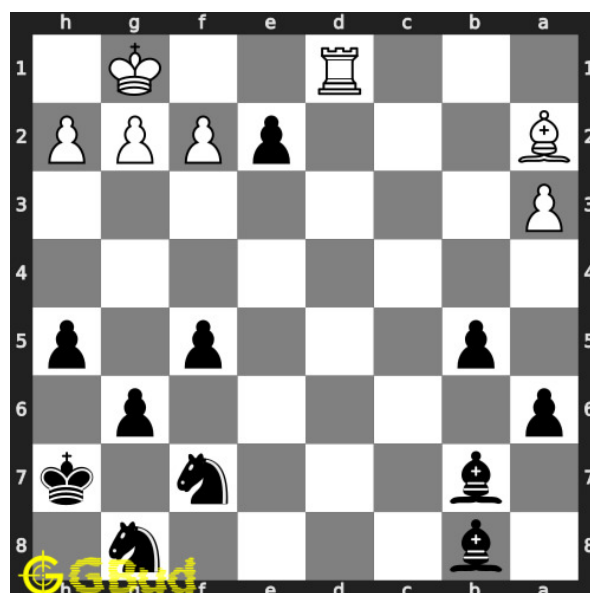


Figure 13: Rxd1

opponent's [rook captures](#) your piece as this is the only legal [move](#) available.

Move 5 Move by black

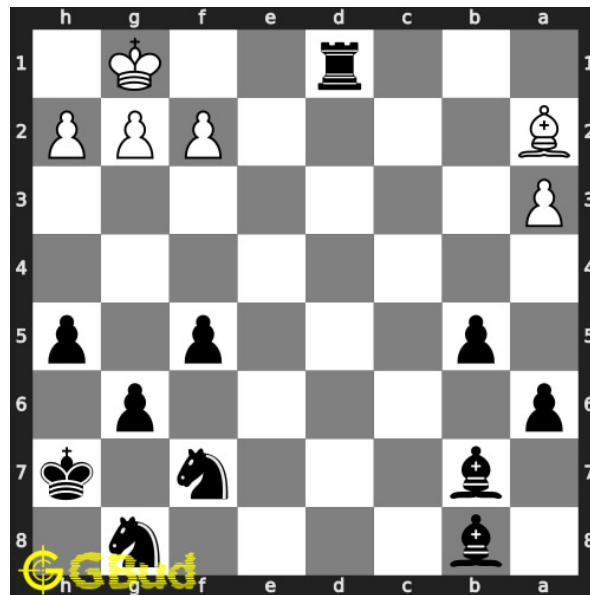


Figure 14: exd1=R\#

pawn in e file is promoted to a rook after capturing the opponent's rook. opponent's king has no free squares to move as it is blocked by friendly pawns. this is called back-rank mate. this is how you can mate in 3 moves.

Right moves for the solution to the hard chess puzzle 0093

Based on the objective of the puzzle, you have to make the right moves. Following are the right moves

1. Rd1+ , Qxd1+ , exd1=Q\#
2. Rd1+ , Qxd1+ , exd1=R\#

Explanation for the moves

1. Rd1+ - Your rook sacrifices itself to deflect the opponent's rook which is in battery formation by giving a check
2. Rxd1 - Opponent's rook captures your piece as this is the only legal move available.
3. Qxd1+ - Your queen sacrifices itself by capturing the opponent's rook and giving next check. This will deflect the opponent's next rook
4. exd1=Q\# - Pawn in e file is promoted to a queen after capturing the opponent's rook. Opponent's king has no free squares to move as it

is blocked by friendly pawns. This is called back-rank mate. This is how you can mate in 3 moves.

5. exd1=R# - Pawn in e file is promoted to a rook after capturing the opponent's rook. Opponent's king has no free squares to move as it is blocked by friendly pawns. This is called back-rank mate. This is how you can mate in 3 moves.
6. For right move - You know the power of the sacrifice and promotion. Keep up the good work
7. For wrong move - You could have had a back-rank mate with a sacrifice of queen and rook. Do not stop trying

Categories of hard chess puzzle 0093

This hard chess puzzle falls in these categories.

1. [Hard chess puzzles](#)
2. [Sacrifice puzzles in chess](#)
3. [Mate in 3 puzzles in chess](#)
4. [Endgame puzzles in chess](#)
5. [Promotion puzzles in chess](#)
6. [Strategy puzzles in chess](#)
7. [Mate pattern puzzles in chess](#)
8. [Pawn puzzles in chess](#)
9. [Rook puzzles in chess](#)
10. [Queen puzzles in chess](#)

hard chess puzzle 0093 chart



Figure 15: hard chess puzzle 93 chart 1



Figure 16: hard chess puzzle 93 chart 2



Figure 17: hard chess puzzle 93 chart 3

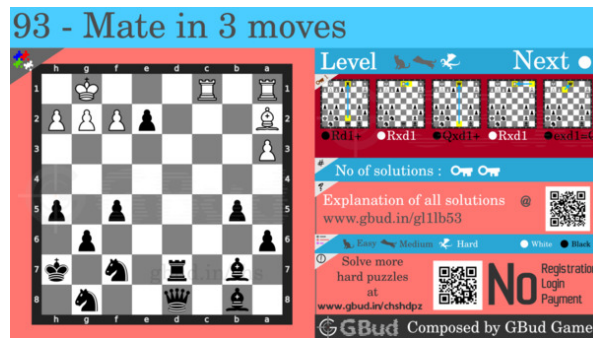


Figure 18: hard chess puzzle 93 chart 4

How to view the solution to hard chess puzzle 0093

To view the [solution to this puzzle](https://gbud.in/gl1lb53), follow the steps given below

1. Go to the [puzzle page](https://gbud.in/gl1lb53)
2. Click the solution button (Key as shown [below](https://gbud.in/gl1lb53)) to view the solution



Figure 19: Click the solution button to view solutions @ <https://gbud.in/gl1lb53>

How to get help for moves in the hard chess puzzle 0093

To get help or the possible next moves in the puzzle, , follow the steps given below

1. Go to the [puzzle page](#)
2. Click the help button (exclamation mark as shown [below](#)) to get help or suggestion on next possible [move](#)



Figure 20: Click the help button to get help on next move @ <https://gbud.in/gl1lb53>



Figure 21: Solve more hard puzzles @ <https://gbud.in/chshdpz>



Figure 22: Solve other puzzles @ <https://gbud.in/chsgppz>

Play chess for free

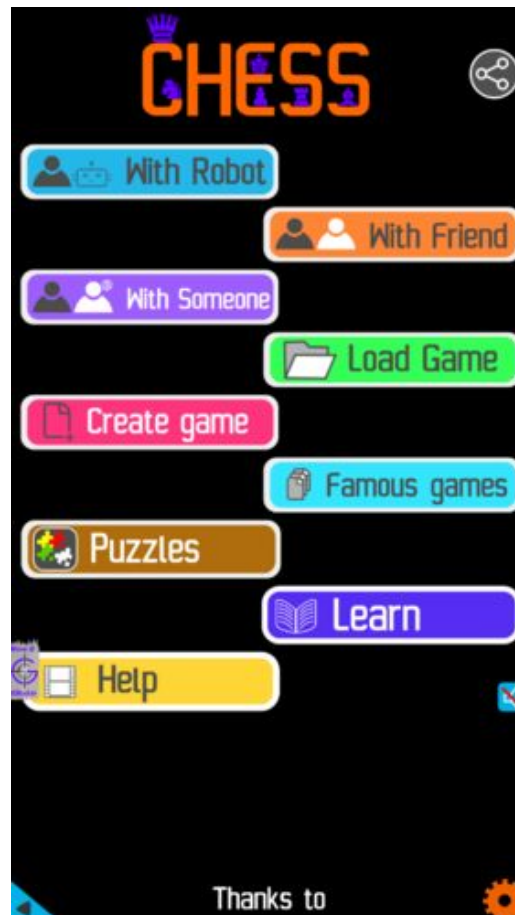


Figure 23: Play chess online for free. Solve puzzles and play with friends

Play chess for free at <https://gbud.in/chs>

We present you a platform to play chess online with friends for free. No need to install any app. You can play chess for free without registration or login.

Simple. You can do several chess related activities.

1. [solve chess puzzles](#)
2. [learn about chess](#)
3. [play chess with computer](#)
4. [play chess with friend](#)
5. [create your own chess games](#)

6. [fen viewer](#)
7. [fen editor](#)
8. [fen generator](#)
9. [pgn viewer](#)
10. [chess board editor](#)
11. [view famous chess games.](#)



Figure 24: Solve this puzzle online by scanning this QR code or go to the link below

<https://gbud.in/gl1lb53>

Read the latest article on Hard Chess puzzle # 0093 - Mate in 3 moves by scanning this QR code or click the link

Previous article : « [Hard Chess puzzle # 0092 - Mate in 4 moves](#)

Next article : [Hard Chess puzzle # 0094 - Mate in 4 moves](#) »

[Back to top](#)

[Contact Us](#)